

Leonardo Nuovo!

The NEW improved Leonardo

Leonardo
the Italian genius

**A great product
made even better
with YOUR
feedback!**

Swing entry gate
with stainless steel
hinges and removal
of entry toe board -
allows easier access



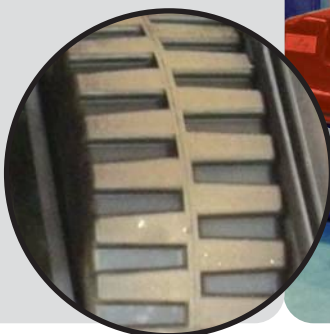
Redesigned folding
step - allows easier
entry with work
boots



New heavy duty
reinforced fibreglass
covers with
improved sliders -
even more resistant
to damage than
before



Wider drive and
steer wheels - for
reduced ground
pressure and
increased traction
on tough job sites



Improved Joystick
control with
trigger style safety
switch - enables
easier use with
gloved hands!



Safety Harness
Anchor point - for
ease of attachment



Repositioned
charger - for extra
protection to water
ingress when power
washing



Improved chassis
design, now 15mm
plate with heavy
duty winch and tie
down points -
making life easier for
transportation



VIC Group
SETTING HIRE STANDARDS™

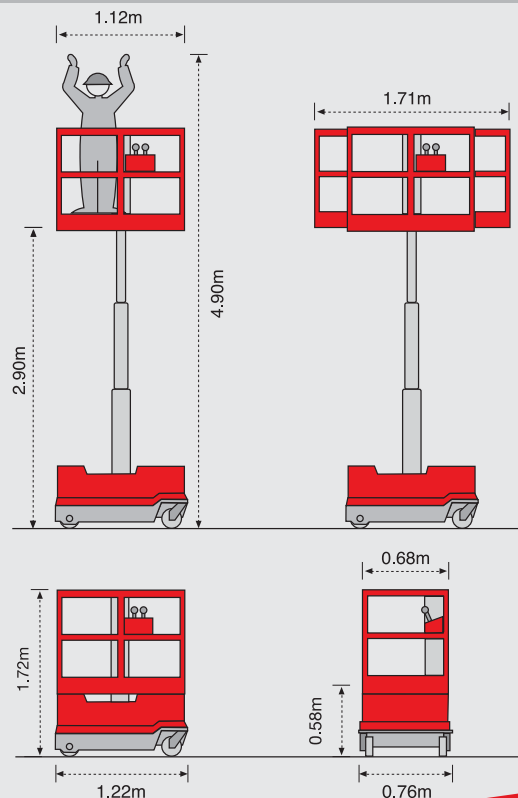
vicgroup.co.uk
01522 696555

Self Propelled Personnel Lift



- **Self Propelled** - drive and work at 4.9 metres high
- **Unrivalled Manoeuvrability** - front wheel steer allows ZERO turning radius
- **Dual Roll Out Decks** - provide outreach at both ends
- **Low Ground Weight** - can be used on raised access floors. Kingspan approved!
- **Super Compact Size** - allows access through standard doorways and into passenger lifts
- **Direct Electric Drive** - providing 6.5 miles (12km) drive or 250 lift cycles on one charge!
- **Locking Steer Wheels** - make it easy to drive in a straight line
- **Easy to Maintain** - proven track record and simple design make for low cost servicing

Technical Specification



Technical Data

Platform Height - Elevated	2.9m	9ft 5.1in
Platform Height - Lowered	0.58m	1ft 9in
Maximum Working Height	4.9m	16ft 1in
Platform Width	0.68m	2ft 2.3in
Platform Minimum Length	1.12m	3ft 6.7in
Platform Maximum Length	1.71m	5ft 6.1in
Base Width	0.76m	2ft 4.9in
Base Length	1.22m	4ft
Stowed Height	1.72m	5ft 6.4in
Maximum Capacity	180 Kg (1 Person)	397 lbs (1 Person)
Total Transport Weight	495 Kg (555 Kg*)	1,091 lbs (1,221 lbs*)
Hydraulic Tank Capacity	22 Litres	5 gals
Gradeability	35%	35%
Batteries	2 x 12v 85Ah	2 x 12v 85Ah
Mains Power supply for Battery Charge	230v / 110v	230v / 110v
Max Drive Speed	50 metres per minute	1.49 miles per hour
Slow Drive Speed (with raised platform)	9 metres per minute	0.336 miles per hour

Driveable when fully elevated with or without the basket extended. *Outdoor Edition

Leonardo Outdoor Edition

NOW ABLE TO WORK OUTDOORS!

By selecting the 'Leonardo Outdoor Edition' you can work outdoors in normal conditions expanding the use and increasing applications.

Ideal for:

- High rise building construction
- General maintenance and cleaning

The Leonardo Outdoor Edition model has an increased weight of 555 kgs (1,221 lbs) and can work in wind speeds up to 12 metres per/sec.

Leonardo makes the world of difference to your job site!

