

**Work with confidence**

**Work cleaner**

**Work faster**

**Work safer**

**NEW AS170**  
**BRICK & MORTAR SAW**

Approved on  
Heritage sites!

**Cut safe**  
**Cut square**  
**Plunge deep**  
**With low dust**

**“Take the plunge”**





- ✓ **No clouds of dust!**
- ✓ **No kick-back or over-run!**

Work faster with a clear view  
and a greater degree of accuracy.

Only 4.3 KG

✓ **Many things a circular blade just cannot do!!**

✓ **GENERAL PURPOSE BLADE** **BL170G HP**  
Brick and mortar cutting,  
ideal for raking out mortar and cutting openings through brickwork,  
see page 6 for more detail.

✓ **HEAD JOINT BLADE** **BL170 HJ**  
Head Joint Blades D: 65mm W:7.2mm  
For raking out mortar from standard mortar joints in brick and stonework to  
a max. of 65mm.  
Ideal for structural bar installations

✓ **PLUNGE BLADE** **BL170P HP**  
Brick and mortar cutting,  
Ideal for fast single brick removal, raking out mortar in  
purp-joints and cutting small openings through brickwork, see  
page 8 for more detail.

✓ **SWITCH-BOX BLADE** **BL170S HP**  
Brick and mortar cutting,  
Ideal for cutting small holes in masonry for electrical boxes,  
shower valves and working around hand made bricks and flints,  
see page 10 for more detail.

✓ **HERITAGE BLADE** **BL170HN**  
Narrow 3mm blade suitable for the delicate heritage work,  
specified by heritage bodies as the only power tool to be used on  
their sites. see page 14 for more detail.

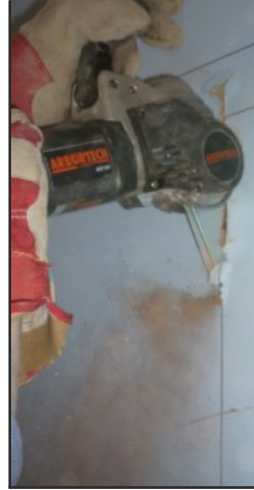
✓ **WOOD BLADE** **BL150W**  
General wood cutting, tree pruning, root cutting and cutting  
timber against masonry. see page 16 for more detail.

✓ **BLADE SHARPENING DISC** **A16054**  
A16054 Arbortech Blade Sharpening Disc – Keep your machine in  
mint condition  
Cut faster, cut cleaner & prolong the life of your blades (comes with  
angle setting guide)

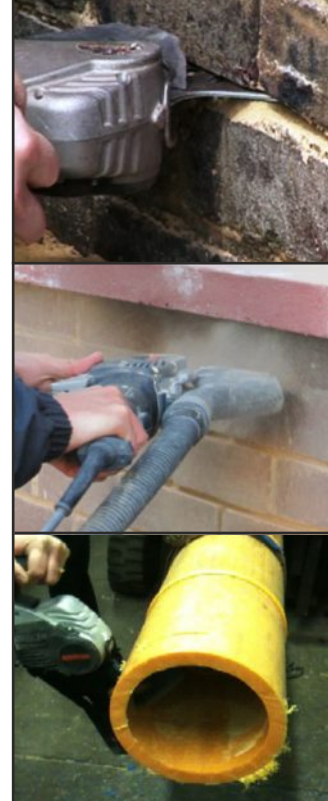




- ✓ GP blade designed for longer cuts.
- ✓ Cuts brick, mortar, soft stone, concrete blocks, plastic, wood & composite materials, 120mm cutting depth.



- ✓ Raking out for re-pointing and brickwork repair.
- ✓ Cutting out openings in masonry, for doorways, windows, electrical cabinets with very little dust.
- ✓ Damp proof membrane replacement.
- ✓ Cuts plastics, asphalt, bitumen & roofing felt - blades move at low speed preventing the tar from melting.
- ✓ Cutting out for cavity trays.
- ✓ Raking out for lead flashings.
- ✓ Removing and cleaning out expansion joints in concrete.
- ✓ Cutting out expansion joints in brickwork.
- ✓ Chasing out for cables, pipes and reinforcement.
- ✓ Cutting trees, tree roots, or astra-turf, soil and all!



Removable

✓ Order code BL170G HP

✓ Chasing work, cuts into corners without over-run!!





## **NEW** 75mm Head joint blade

- ✓ Blade designed for Raking out joints in masonry
- ✓ Cuts brick, mortar, soft stone, concrete blocks, plastic, wood & composite materials, 75mm cutting depth 7.2mm width.
- ✓ Order code BL170 HJ

✓ Rakes out purp-joint faster than anything else!!

- ✓ Raking out for re-pointing and brickwork repair to a maximum depth of 75mm.
- ✓ Perfect for fast raking of horizontal and vertical (purp) mortar joints.
- ✓ Ideal for raking out to a depth of 75mm for lead flashings.
- ✓ Chasing out for cables and pipes.
- ✓ Mortar raking, ideal for raking out mortar joints to controlled depth, both bed and purp-joints.





- ✓ Approved on Heritage sites.
- ✓ Providing the accuracy required for restoration work.



- ✓ Designed for cutting & raking out of joints as narrow as 3mm, often found on older and historic properties.
- ✓ Raking out of narrow mortar joints less than 3mm can be achieved by using one blade.
- ✓ Cutting out old lead joints.
- ✓ Removing putty and jointing compounds.
- ✓ Cleaning out cracks in plaster prior to filling.
- ✓ Cutting out and preparing for new stone work.
- ✓ Removing old tile grout.



✓ Order code BL170HN

✓ Only power tool approved to work on heritage sites!





I would just like to take a little of your time to tell you what a fantastic bit of kit this machine is .

When I first saw the Arbortech saw in a trade magazine, I read up on it and thought that this would be a great tool for a new contract that I was about to start. For years I have used disc cutters and drills to cut out and tooth brickwork with hours of labour.

My new job was to convert a old oast house and extend it to create a 5 bed building. We had lots of old windows to remove and cut out old brickwork ready for new walls and frames to go in. We set up the saw and started to cut out the old walls ,and was amazed at how quick and easy this tool made the job. We toothed out and cut a new opening for a door frame in half the time we would normally take and we did not chip any bricks in doing so.

I first though that the tool was a lot of money to buy but after using on this job I would highly recommend it to any builder like myself that takes pride in their work and wants to get a job completed in good time. I have paid for the saw on this one job in the time it has saved me in labour costs.

Once again thank you for a excellent tool

Yours Sincerely  
Paul Ray  
Director of Paul Ray Construction Ltd

Using a conventional hammer action drill will get the thing out but it will smash the brick itself to pieces in the process.

What is required is something with a little more finesse, as befits one of the finest examples of Jacobean architecture in the country, but with the muscle to do the job – what is required, in fact is the unique Arbortech Allsaw.

#### Lime machine

“The amount of time this tool has saved me would add up to a good many man hours,” enthused Mr Kirby, as he took the tool to one of the property’s original garden walls.

“What you need is something that’s capable of getting the brick out unscathed because, if you damage them then you’re getting into the realms of having to have replacements specially made, which is not exactly cheap. It’s always going to be difficult to get an exact match with the existing brickwork with new stock as well and the difference can be a quite unsightly.”

Given that restoration work tends to be the bread and butter of A.B. Kirby & Sons they took the decision to invest in two of the tools, and have been using them ever since on any number of jobs in the hundred mile or so radius in which they work.

“Because it’s old brickwork, the tool can easily handle the lime mortar that was used back then and cuts through it pretty easily.”

Due to the Arbortech’s two forward facing blades which oscillate to combine a hammering and cutting action, the saw also creates very little airborne dust. In fact, Kirby claims that it cuts faster than any existing reciprocating saw and as fast as most small angle grinders.







**170mm  
General  
Purpose Blade**



**170mm  
Wood Blade**

# ALLSAW

Order Code: BL170G XL

## NEW 170mm TCT Blade

CUTS BRICKS, MORTAR, SOFT STONE, PLASTIC & WOOD



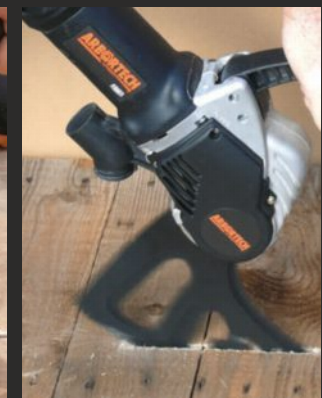
**THE ALLSAW GOES LARGE !**

Order Code:  
BL170W XL

## NEW 170mm Wood Blade



**CUTS WOOD LIKE THERE'S NO TOMORROW!  
THE SAFE ALTERNATIVE TO THE CHAIN SAW!**





**NEW MOTOR WITH OVER 40% MORE POWER!**

- ✓ FAST SINGLE BRICK REMOVAL
- ✓ CLEANER & SAFER TO WORK WITH
- ✓ REPOINTING & REPAIRS
- ✓ FAR LESS DUST, LESS CLEAN UP, LESS HAZARDS
- ✓ CHASING WORK & CUT OUTS MADE EASY
- ✓ INTO 90° CORNERS – NO OVERRUN
- ✓ CUTS BRICK, MORTAR, SOFT STONE, PLASTIC, WOOD & COMPOSITE MATERIAL
- ✓ SO VERSATILE 100'S OF USES
- ✓ TREE ROOTS.

**Prove it for yourself!**



Approved on  
Heritage sites!

**NEW AS170**  
**BRICK & MORTAR SAW**  
*With high performance blades*

**Removes bricks  
clean,  
fast  
and  
easily!**

**Cut safe  
Cut square  
Plunge deep  
With low dust**

**“Take the plunge”**